

YEAR

2016

LINK CHATHAM RD N (from WUHU ST to HONG CHONG RD)

COVERAGE (B) STATION

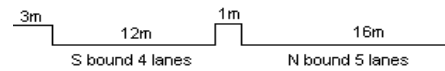
4208

ROAD NETWORK

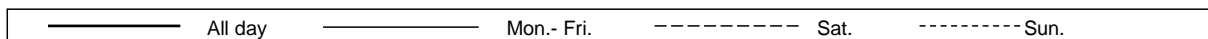
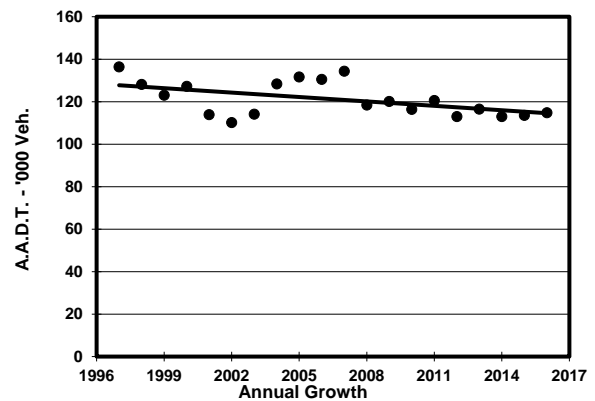
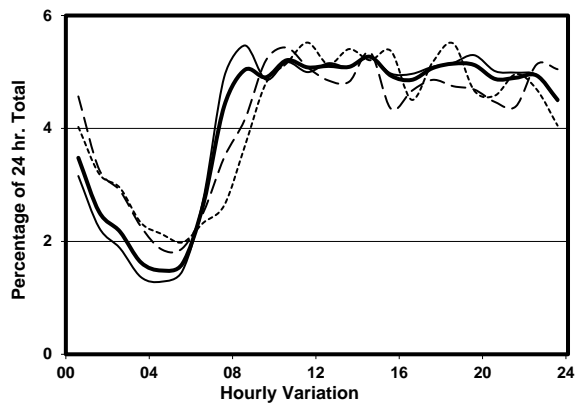
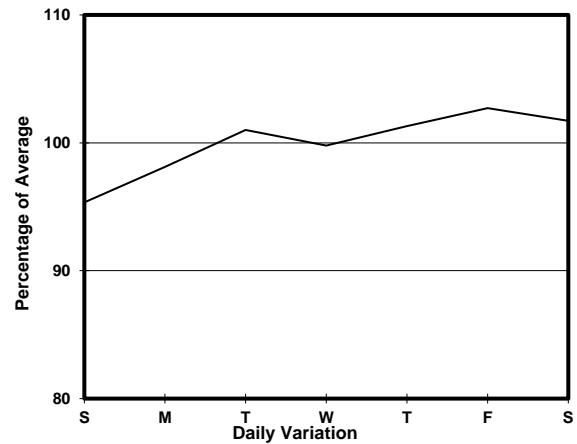
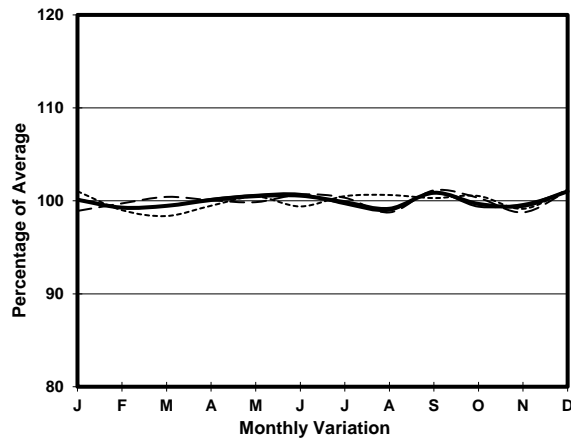
MAJOR

ROAD TYPE

PRIMARY DISTRIBUTOR



1. TRAFFIC FLOW VARIATION AND GROWTH



2. TRAFFIC CHARACTERISTICS (BY DIRECTION)

Parameter	All - Day	Mon. - Fri.	Sat.	Sun.
SOUTH BOUND				
A.A.D.T.	46620	45780	48350	49920
R 12 / 24 - %	57.3	57.8	53.6	58.3
R 16 / 24 - %	77	78.2	72.6	75.5
AM Peak Hour	0900-1000	0700-0800	0900-1000	0900-1000
One-way flow at AM peak hour	2490	2700	2940	2690
T - % (AM)	-	20.4	-	-
PM Peak Hour	1800-1900	1800-1900	1800-1900	1800-1900
One-way flow at PM peak hour	2000	1850	2020	2760
T - % (PM)	-	13.1	-	-
Prop.of commercial vehicles - 16 hr.	-	12.9	-	-
NORTH BOUND				
A.A.D.T.	68180	69990	68710	59790
R 12 / 24 - %	62.1	63.3	59.4	57.9
R 16 / 24 - %	82	83.4	77.9	78.3
AM Peak Hour	0800-0900	0800-0900	0900-1000	0900-1000
One-way flow at AM peak hour	3430	3850	3160	2580
T - % (AM)	-	14.5	-	-
PM Peak Hour	1700-1800	1700-1800	1700-1800	1800-1900
One-way flow at PM peak hour	3990	4180	3930	3280
T - % (PM)	-	19.4	-	-
Prop.of commercial vehicles - 16 hr.	-	15.6	-	-

3. OTHER INFORMATION AND COMMENT

4. Vehicle classification and occupancy - Monday to Friday

Time		Class of vehicle									
		Motor	Private	Taxi	Private	PLB	Goods veh.		Non	Fr. Bus	
		Cycle	Car		LB		Light	M & H	Fr. Bus	SD	DD
0700-0800	Pro	5.3	32.8	21.0	3.0	3.8	14.4	7.4	5.8	0.1	6.4
	Ocp	1.0	1.4	2.1	8.5	11.6	1.4	1.2	17.0	64.0	42.9
0800-0900	Pro	4.5	46.5	17.8	1.4	1.9	13.7	4.5	3.9	0.1	5.6
	Ocp	1.1	1.3	2.1	3.4	12.3	1.5	1.2	22.1	9.0	58.0
0900-1000	Pro	3.3	38.7	21.1	0.8	2.0	18.9	5.3	2.9	0.0	7.0
	Ocp	1.0	1.3	2.0	4.4	10.3	1.5	1.2	14.7	0.0	33.4
1000-1100	Pro	3.4	30.4	24.6	0.7	1.7	25.2	6.2	2.0	0.0	5.9
	Ocp	1.0	1.4	2.0	2.3	11.8	1.5	1.3	14.4	0.0	26.9
1100-1200	Pro	2.3	30.0	25.1	0.8	1.7	25.8	7.4	1.5	0.0	5.5
	Ocp	1.1	1.4	1.9	2.8	9.5	1.4	1.3	16.7	0.0	26.9
1200-1300	Pro	2.8	30.2	27.1	1.0	2.0	24.1	5.9	1.6	0.0	5.2
	Ocp	1.0	1.4	1.9	3.8	8.0	1.4	1.2	13.8	0.0	29.1
1300-1400	Pro	2.8	26.3	25.1	1.3	2.0	26.0	8.1	3.4	0.0	5.1
	Ocp	1.1	1.4	2.1	2.8	6.9	1.4	1.2	19.1	0.0	33.8
1400-1500	Pro	2.7	33.5	22.7	0.8	1.6	23.6	6.5	3.7	0.0	4.7
	Ocp	1.1	1.4	2.0	1.8	10.2	1.5	1.1	20.1	0.0	35.4
1500-1600	Pro	3.2	31.9	23.4	1.5	1.4	24.3	6.1	3.4	0.0	4.9
	Ocp	1.1	1.3	2.0	6.8	9.8	1.5	1.3	22.5	0.0	37.4
1600-1700	Pro	3.1	33.4	25.2	1.4	2.3	20.5	4.7	3.8	0.0	5.5
	Ocp	1.0	1.4	1.9	4.5	9.5	1.5	1.1	13.7	0.0	40.3
1700-1800	Pro	5.3	32.2	23.2	1.2	2.9	19.7	2.8	5.2	0.0	7.4
	Ocp	1.0	1.4	2.1	3.1	11.9	1.5	1.3	16.4	0.0	47.0
1800-1900	Pro	6.9	43.7	22.5	0.3	2.1	11.1	1.4	6.2	0.0	5.9
	Ocp	1.1	1.4	2.2	4.8	14.2	1.5	1.3	24.0	0.0	61.4
1900-2000	Pro	4.4	42.7	30.6	0.3	2.4	8.5	1.0	4.2	0.0	6.0
	Ocp	1.1	1.5	2.2	1.8	14.5	1.5	1.4	22.1	0.0	48.1
2000-2100	Pro	3.3	37.7	35.0	0.2	2.7	7.7	2.1	4.6	0.0	6.5
	Ocp	1.1	1.4	2.1	1.0	12.4	1.3	1.1	15.1	0.0	37.3
2100-2200	Pro	3.2	37.1	38.3	0.3	3.0	8.2	1.1	3.1	0.0	5.7
	Ocp	1.1	1.5	2.1	2.8	11.2	1.3	1.6	7.3	0.0	32.4
2200-2300	Pro	3.8	41.0	37.0	0.1	3.5	6.0	1.6	1.4	0.0	5.8
	Ocp	1.1	1.5	2.1	1.0	10.9	1.4	1.8	3.1	0.0	36.3
16 hours	Pro	3.7	35.5	26.2	0.9	2.3	17.6	4.6	3.5	0.1	5.8
	Ocp	1.1	1.4	2.1	4.4	11.1	1.5	1.2	17.7	36.5	39.3

Legend

Pro. Proportion of vehicles in % (Sum may not add up to 100% due to figure rounding)*

Ocp. Average occupancy of vehicles including both driver and passengers*

M&H Medium and Heavy

* All traffic data are collected from combined bounds except for one way traffic